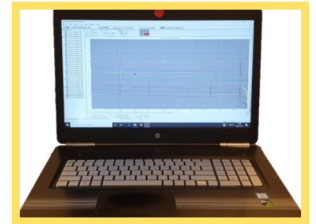


# OP-464 OTDR Trace Processing & Automated Reporting

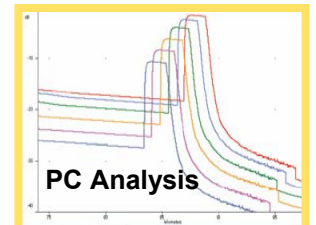
## (1) SOFTWARE OPERATION

- Create Trace Folders
- Store Traces and Trace Reports
- Open Networks & Create a new Trace List
- Select the Traces to add
- Operating the Software and GUI
- Set Preferences to adjust trace processing
- Set Preferences to adjust trace display
- How to Change the Trace List



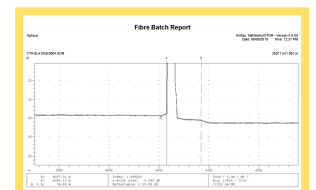
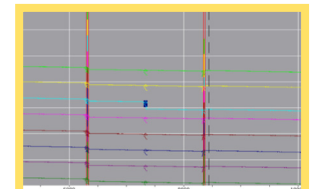
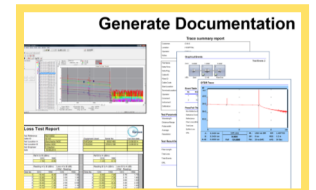
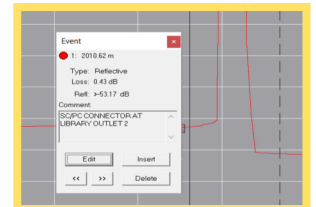
## (2) BATCH PROCESSING

- Batch Processing Menu
- Batch Processing a Header
- Batch Removal of Launch and Tail Cables
- Batch Processing Files to make them Consistent
- Printing Traces and Event Tables



## (3) GENERATING REPORTS

- Building the Smart Splice Template
- Applying the Splice Template
- Generating Reports
- Checking The Filename Convention
- File Ordering
- Loading Traces from Both Directions
- Print Trace Summary, Exception, Fibre Acceptance Reports
- Print a Bi-Directional splice Summary Report



Splice Number / A->B Loc(m) / B->A Loc(m)										
Fiber Number	001	002	003	004	Avg	Mn	Max	End	End(dB)	
2.01	3.03	4.05	6.34							
8.35	7.33	6.31	2.02							
001	0.13	0.00	0.28	0.38	0.28	0.13	0.38	3.00		
002	0.14	0.00	0.28	0.35	0.28	0.14	0.35	3.01		
003	0.22	1.62	0.33	0.37	0.31	0.22	1.62	4.48		
004	0.26	0.00	0.34	0.38	0.33	0.26	0.38	3.07		
005	0.19	0.01	0.35	0.37	0.30	0.19	0.37	3.07		
006	0.24	0.00	0.34	0.37	0.32	0.24	0.37	3.08		
007	0.23	0.01	0.38	0.38	0.33	0.23	0.38	3.12		
008	0.19	0.00	0.38	0.38	0.32	0.19	0.38	3.13		
Average	0.20	0.28	0.33	0.37	0.30			3.24		
Min	0.13	0.00	0.28	0.35		0.13		3.00		
Max	0.26	1.62	0.38	0.38				1.62	4.48	

**OP-464 Duration : 1 Day**  
Please contact us on 01419517822 to discuss your needs.

**Opticus**  
Suite 1-1 Titan Enterprise, 1 Aurora Ave  
Clydebank G81 1BF

Tel: +44 (0) 1419517822  
E-mail: info@opticus.co.uk  
Website: www.opticus.co.uk